

REGIONAL IMPACT & INNOVATION REPORT

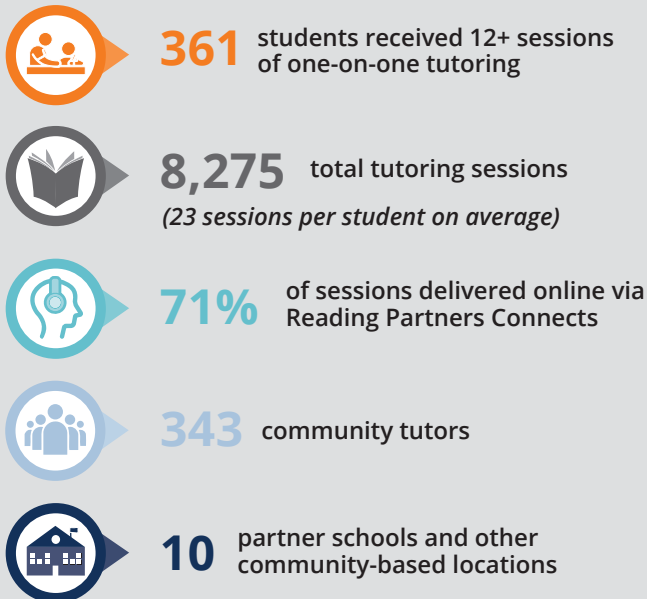
South Carolina, 2021-22



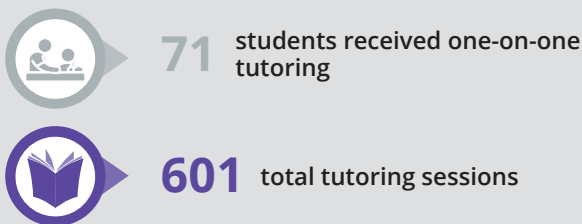
With schools facing attendance and enrollment challenges, Reading Partners leveraged a mix of traditional and innovative programs and partnerships to provide critical support to students, schools, and communities throughout a second full year of COVID-19 disruptions.

By the numbers

— During the school year —



— In the summer —



Program recognition

Principals
80%

report improved school-wide progress.*

Teachers
100%

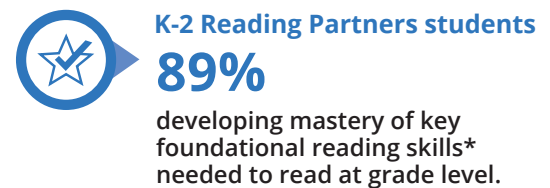
report Reading Partners is valuable to their school.*

Volunteers
90%

are satisfied with their volunteering experience.*

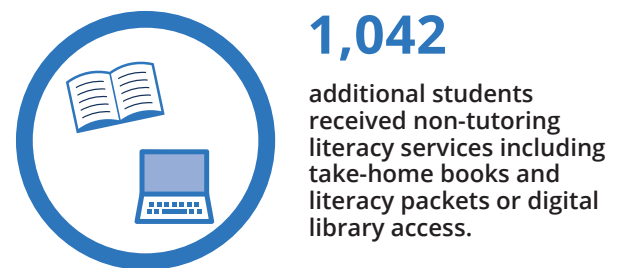
*Among respondents of 2021-22 surveys

Student performance



*We track growth in the key foundational literacy skills students need to become independent readers, such as alphabetic principle, phonics, and vocabulary.

Additional school and family literacy support



An evidence-based program

